

Working Safely Around Electrical Power Lines



⚡ Always lower a portable grain auger before moving it.



⚡ Keep at least three metres away from overhead power lines.



⚡ Don't approach a vehicle that is in contact with a power line.



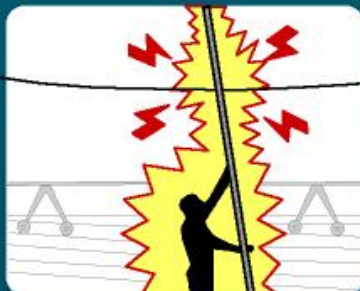
⚡ Never try to lift a power line.



⚡ Trimming trees near wires is for qualified professionals only.



⚡ Stay fifteen metres away and report fallen lines immediately.



⚡ Never raise irrigation pipes without checking for safe distances from power lines.



⚡ Before you dig, locate the underground cables.



⚡ When using a ladder, look up to locate the power line.

If the equipment you are operating contacts a power line:

DO NOT get off the machinery unless you are in immediate danger. Never touch the ground and the machine/equipment at the same time, as you will become a path for the electricity to travel to the ground.

If you must leave the machinery, **jump about a half metre away from the equipment and land with feet together and arms close to the body.** Keep your feet from touching each other and shuffle 15 metres away from the machinery or the fallen wire.

For more information please contact
Workers Compensation Board of PEI
Phone: 902-368-5697
Toll Free: 1-800-237-5049
www.wcb.pe.ca

Artwork provided by Ontario's ElecSafe Alliance and Farm Safety Association Inc.

Safety Matters @Work
Workers Compensation Board of PEI