

Farming Safely Around Electrical Power Lines



Always lower a portable grain auger before moving it.



Keep at least three metres away from overhead power lines.



Don't approach a vehicle that is in contact with a power line.



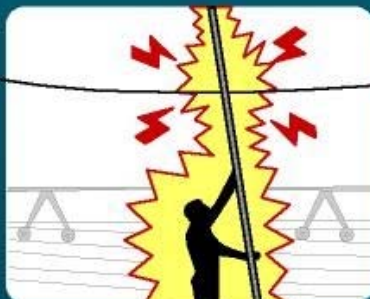
Never try to lift a power line.



Trimming trees near wires is for qualified professionals only.



Stay fifteen metres away and report fallen lines immediately.



Never raise irrigation pipes without checking for safe distances from power lines.



Before you dig, locate the underground cables.



When using a ladder, look up to locate the power line.

If the equipment you are operating contacts a power line:

DO NOT get off the machinery unless you are in immediate danger. Never touch the ground and the machine/equipment at the same time, as you will become a path for the electricity to travel to the ground.

If you must leave the machinery, **jump about a half metre away from the equipment and land with feet together and arms close to the body.** Keep your feet from touching each other and shuffle 15 metres away from the machinery or the fallen wire.

For more information please contact
Workers Compensation Board of PEI
Phone: 902-368-5697
Toll Free: 1-800-237-5049
www.wcb.pe.ca

Artwork provided by Ontario's ElecSafe Alliance and Farm Safety Association Inc.

Safety Matters @Work
Workers Compensation Board of PEI